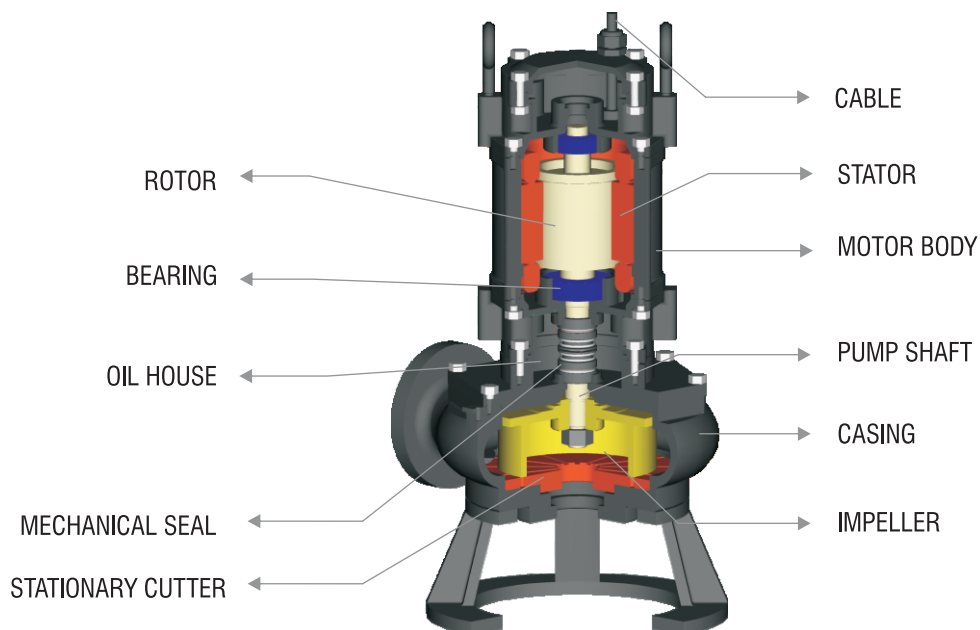
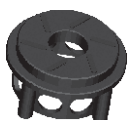
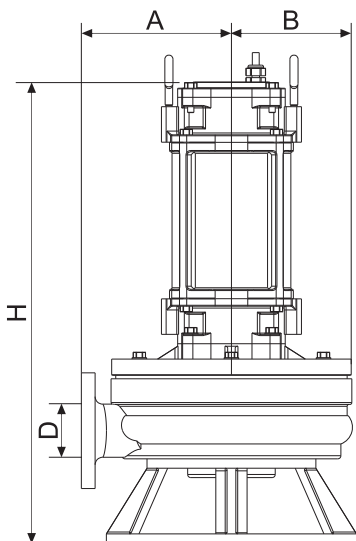


Sewage - Cutter Pump - PC Series

Cross Sectional View



Dimensional Details



| Model | A | B | D | H |
|----------------------|-----|-----|----|-----|
| 32PC - 7 - 14 - 1.0 | 212 | 103 | 32 | 575 |
| 32PC - 8 - 12 - 1.0 | 212 | 103 | 32 | 575 |
| 40PC - 10 - 10 - 1.0 | 212 | 103 | 40 | 575 |
| 40PC - 12 - 8 - 1.0 | 212 | 103 | 40 | 575 |
| 50PC - 14 - 7 - 1.0 | 212 | 103 | 50 | 575 |
| 40PC - 10 - 14 - 1.5 | 212 | 103 | 40 | 640 |
| 40PC - 12 - 12 - 1.5 | 212 | 103 | 40 | 640 |
| 50PC - 14 - 10 - 1.5 | 212 | 103 | 50 | 640 |
| 50PC - 16 - 9 - 1.5 | 212 | 103 | 50 | 640 |
| 50PC - 8 - 18 - 1.5 | 212 | 103 | 50 | 640 |
| 50PC - 12 - 16 - 2.0 | 212 | 103 | 50 | 640 |
| 50PC - 14 - 14 - 2.0 | 212 | 103 | 50 | 640 |
| 50PC - 16 - 12 - 2.0 | 212 | 103 | 50 | 640 |
| 50PC - 11 - 18 - 2.0 | 212 | 103 | 50 | 640 |
| 50PC - 15 - 20 - 3.0 | 212 | 103 | 50 | 570 |
| 50PC - 25 - 15 - 3.0 | 212 | 103 | 50 | 570 |
| 50PC - 42 - 9 - 3.0 | 212 | 103 | 50 | 570 |
| 65PC - 25 - 15 - 3.0 | 245 | 163 | 65 | 570 |
| 80PC - 50 - 8 - 3.0 | 279 | 177 | 80 | 570 |
| 80PC - 40 - 7 - 3.0 | 279 | 177 | 80 | 570 |
| 50PC - 17 - 25 - 4.0 | 238 | 123 | 50 | 570 |
| 65PC - 37 - 13 - 4.0 | 245 | 163 | 65 | 570 |
| 80PC - 43 - 13 - 4.0 | 279 | 177 | 80 | 570 |
| 80PC - 50 - 10 - 4.0 | 279 | 177 | 80 | 570 |
| 50PC - 24 - 20 - 5.0 | 238 | 123 | 50 | 660 |
| 50PC - 40 - 15 - 5.0 | 238 | 123 | 50 | 660 |
| 50PC - 15 - 40 - 7.5 | 193 | 203 | 50 | 740 |

| Model | A | B | D | H |
|-------------------------|-----|-----|-----|------|
| 50PC - 25 - 32 - 7.5 | 193 | 203 | 50 | 740 |
| 50PC - 25 - 38 - 10.0 | 193 | 203 | 50 | 740 |
| 65PC - 25 - 28 - 5.0 | 274 | 202 | 65 | 660 |
| 80PC - 40 - 15 - 5.0 | 279 | 177 | 80 | 660 |
| 80PC - 60 - 13 - 5.0 | 279 | 177 | 80 | 660 |
| 80PC - 50 - 25 - 10.0 | 300 | 195 | 80 | 740 |
| 100PC - 80 - 7 - 4.0 | 250 | 186 | 100 | 570 |
| 100PC - 100 - 5 - 4.0 | 250 | 186 | 100 | 570 |
| 100PC - 80 - 9 - 5.0 | 250 | 18 | 100 | 660 |
| 100PC - 100 - 7 - 5.0 | 250 | 186 | 100 | 660 |
| 100PC - 65 - 15 - 7.5 | 292 | 194 | 100 | 740 |
| 100PC - 110 - 10 - 7.5 | 292 | 194 | 100 | 740 |
| 100PC - 80 - 20 - 10.0 | 292 | 194 | 100 | 740 |
| 100PC - 100 - 15 - 10.0 | 292 | 194 | 100 | 740 |
| 100PC - 80 - 22 - 12.5 | 266 | 175 | 100 | 890 |
| 100PC - 100 - 16 - 12.5 | 266 | 175 | 100 | 890 |
| 100PC - 50 - 35 - 15.0 | 266 | 175 | 100 | 890 |
| 100PC - 70 - 30 - 15.0 | 266 | 175 | 100 | 890 |
| 150PC - 110 - 15 - 10.0 | 286 | 227 | 150 | 765 |
| 150PC - 145 - 9 - 10.0 | 286 | 227 | 150 | 765 |
| 150PC - 210 - 7 - 10.0 | 286 | 227 | 150 | 765 |
| 150PC - 110 - 16 - 12.5 | 286 | 227 | 150 | 890 |
| 150PC - 150 - 9 - 12.5 | 286 | 227 | 150 | 890 |
| 150PC - 220 - 7 - 12.5 | 286 | 227 | 150 | 890 |
| 150PC - 170 - 15 - 15 | 286 | 227 | 150 | 1040 |

* All dimensions are in mm
* Dimensions shown are for guidance and planning purposes only

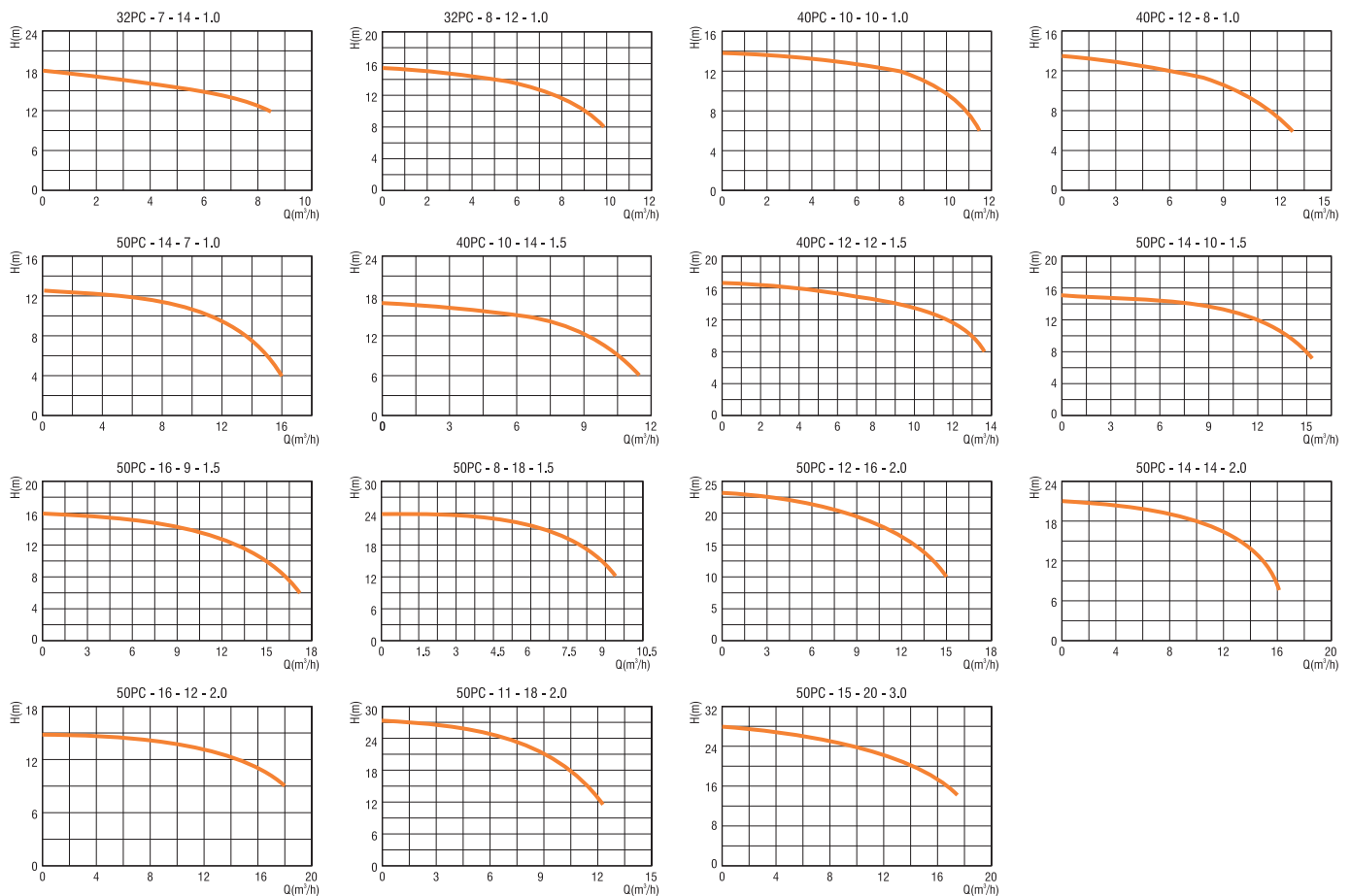
Sewage - Cutter Pump - PC Series

Performance Chart

| S.No | Model | Motor Power HP/kW | Max. Particle Size (mm) | Q(m ³ /h) | 2 | 4 | 6 | 8 | 10 | 12 | 14 | 16 |
|------|----------------------|----------------------|----------------------------|----------------------|------|------|------|------|------|------|------|-----|
| 1 | 32PC - 7 - 14 - 1.0 | 1.0 / 0.7 | 29 | Head (m) | 17 | 16 | 15 | 12.5 | - | - | - | - |
| 2 | 32PC - 8 - 12 - 1.0 | 1.0 / 0.7 | 29 | | 15 | 14.5 | 13.5 | 12 | 8 | - | - | - |
| 3 | 40PC - 10 - 10 - 1.0 | 1.0 / 0.7 | 36 | | 13.8 | 13.6 | 12.5 | 12 | 10 | - | - | - |
| 4 | 40PC - 12 - 8 - 1.0 | 1.0 / 0.7 | 36 | | - | 12.5 | 12 | 11.6 | 10.5 | 8 | - | - |
| 5 | 50PC - 14 - 7 - 1.0 | 1.0 / 0.7 | 45 | | - | - | 11.8 | 11.4 | 10.8 | 9.5 | 7 | 4 |
| 6 | 40PC - 10 - 14 - 1.5 | 1.5 / 1.1 | 36 | | 20 | 19 | 18 | 17 | 14 | - | - | - |
| 7 | 40PC - 12 - 12 - 1.5 | 1.5 / 1.1 | 36 | | - | 16 | 15 | 14.5 | 14 | 12 | - | - |
| 8 | 50PC - 14 - 10 - 1.5 | 1.5 / 1.1 | 45 | | - | 14.5 | 13.8 | 13 | 12.5 | 12 | 10 | - |
| 9 | 50PC - 16 - 9 - 1.5 | 1.5 / 1.1 | 45 | | - | - | 15 | 14.5 | 14 | 13.5 | 11.5 | 9 |
| 10 | 50PC - 8 - 18 - 1.5 | 1.5 / 1.1 | 45 | | 24 | 23 | 22 | 18 | - | - | - | - |
| 11 | 50PC - 12 - 16 - 2.0 | 2.0 / 1.5 | 45 | | - | - | 21 | 20 | 18 | 16 | 12 | - |
| 12 | 50PC - 14 - 14 - 2.0 | 2.0 / 1.5 | 45 | | - | - | - | 19 | 18 | 17 | 14 | 7.5 |
| 13 | 50PC - 16 - 12 - 2.0 | 2.0 / 1.5 | 45 | | - | - | 15 | 14 | 13.8 | 13.4 | 13 | 12 |
| 14 | 50PC - 11 - 18 - 2.0 | 2.0 / 1.5 | 45 | | 27 | 26 | 25 | 23 | 20 | 14 | - | - |
| 15 | 50PC - 15 - 20 - 3.0 | 3.0 / 2.2 | 45 | | - | - | 26 | 25 | 24 | 23 | 21 | 18 |

Note : Recommended Particle Size 50 - 80 % of Discharge Size

Performance Curve



Sewage - Cutter Pump - PC Series

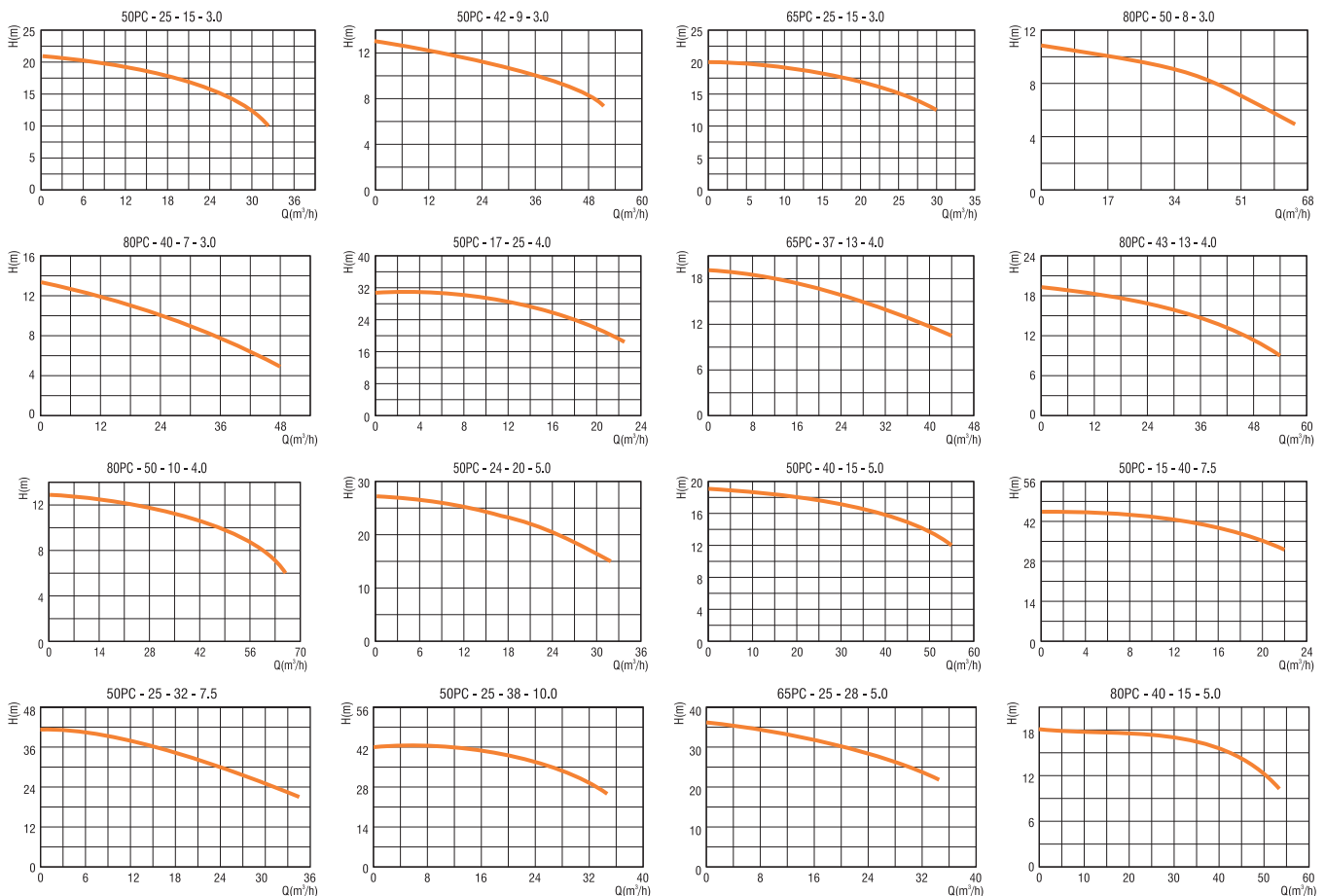
Performance Chart

| S.No | Model | Motor Power HP/kW | Max. Particle Size (mm) | Q(m ³ /h) | 7 | 14 | 21 | 28 | 35 | 42 | 49 | 56 |
|------|-----------------------|-------------------|-------------------------|----------------------|------|------|------|------|------|------|-----|----|
| 16 | 50PC - 25 - 15 - 3.0 | 3.0 / 2.2 | 45 | Head (m) | 19.5 | 18 | 16 | 14 | - | - | - | - |
| 17* | 50PC - 42 - 9 - 3.0 | 3.0 / 2.2 | 45 | | - | 12 | 11 | 10.5 | 10 | 9 | 7.5 | - |
| 18 | 65PC - 25 - 15 - 3.0 | 3.0 / 2.2 | 59 | | 19 | 18 | 16 | 13.5 | - | - | - | - |
| 19* | 80PC - 50 - 8 - 3.0 | 3.0 / 2.2 | 72 | | 11 | 10.8 | 10.5 | 10 | 9.5 | 8.5 | 8 | 7 |
| 20* | 80PC - 40 - 7 - 3.0 | 3.0 / 2.2 | 72 | | - | 12 | 11 | 9 | 8 | 6 | - | - |
| 21 | 50PC - 17 - 25 - 4.0 | 4.0 / 3.0 | 45 | | 30 | 27 | 20 | - | - | - | - | - |
| 22* | 65PC - 37 - 13 - 4.0 | 4.0 / 3.0 | 59 | | 18.5 | 18 | 16.5 | 15 | 14 | 11.5 | - | - |
| 23* | 80PC - 43 - 13 - 4.0 | 4.0 / 3.0 | 72 | | - | 18 | 17 | 16 | 15 | 13.5 | 11 | - |
| 24* | 80PC - 50 - 10 - 4.0 | 4.0 / 3.0 | 72 | - | - | 12.5 | 12 | 11.5 | 11 | 10.5 | - | |
| S.No | Model | Motor Power HP/kW | Max. Particle Size (mm) | Q(m ³ /h) | 5 | 10 | 15 | 20 | 25 | 30 | 35 | 40 |
| 25 | 50PC - 24 - 20 - 5.0 | 5.0 / 3.7 | 45 | Head (m) | 26 | 25 | 24 | 22 | 20 | 16 | - | - |
| 26* | 50PC - 40 - 15 - 5.0 | 5.0 / 3.7 | 45 | | - | - | 18 | 17.5 | 17 | 16.5 | 16 | 15 |
| 27 | 50PC - 15 - 40 - 7.5 | 7.5 / 5.6 | 45 | | 44 | 43 | 40 | 34 | 32 | 27 | 20 | - |
| 28 | 50PC - 25 - 32 - 7.5 | 7.5 / 5.6 | 45 | | 40 | 38 | 36 | 35 | 32 | 27 | - | - |
| 29 | 50PC - 25 - 38 - 10.0 | 10.0 / 7.5 | 45 | | 43 | 42 | 41 | 40 | 38 | 35 | 32 | - |
| 30* | 65PC - 25 - 28 - 5.0 | 5.0 / 3.7 | 59 | | 35 | 33 | 32 | 30 | 28 | 25 | - | - |
| 31* | 80PC - 40 - 15 - 5.0 | 5.0 / 3.7 | 72 | | - | - | - | 18 | 17.5 | 17 | 16 | 15 |

* Pump Speed - 1440 rpm

Note : Recommended Particle Size 50 - 80 % of Discharge Size

Performance Curve



Sewage - Cutter Pump - PC Series

Performance Chart

| S.No | Model | Motor Power HP/kW | Max. Particle Size (mm) | Q(m ³ /h) | 15 | 30 | 45 | 60 | 75 | 90 | 105 | 120 |
|------|-------------------------|-------------------|-------------------------|----------------------|----------------------|------|------|------|------|------|------|------|
| 32* | 80PC - 60 - 13 - 5.0 | 5.0 / 3.7 | 72 | Head (m) | 17 | 16 | 14.5 | 13 | 9.5 | - | - | - |
| 33* | 80PC - 50 - 25 - 10.0 | 10.0 / 7.5 | 72 | | 31 | 29 | 26 | 22 | - | - | - | - |
| 34* | 100PC - 80 - 7 - 4.0 | 4.0 / 3.0 | 90 | | - | 12.5 | 11.5 | 10.5 | 9.5 | 7 | - | - |
| 35* | 100PC - 100 - 5 - 4.0 | 4.0 / 3.0 | 90 | | - | 12 | 11 | 10 | 9.5 | 8 | 5 | - |
| 36* | 100PC - 80 - 9 - 5.0 | 5.0 / 3.7 | 90 | | - | 13 | 12 | 11 | 9.5 | 7 | - | - |
| 37* | 100PC - 100 - 7 - 5.0 | 5.0 / 3.7 | 90 | | - | 12 | 11 | 10 | 9 | 8 | 6.5 | - |
| 38* | 100PC - 65 - 15 - 7.5 | 7.5 / 5.5 | 90 | | 20 | 19 | 18 | 16 | 12.5 | - | - | - |
| 39* | 100PC - 110 - 10 - 7.5 | 7.5 / 5.5 | 90 | | - | - | 13 | 12.5 | 12 | 11.5 | 10.5 | 9 |
| 40* | 100PC - 80 - 20 - 10.0 | 10.0 / 7.5 | 90 | | - | 24 | 23 | 22 | 21 | 18 | 14 | - |
| 41* | 100PC - 100 - 15 - 10.0 | 10.0 / 7.5 | 90 | | - | 20 | 19 | 18.5 | 17.8 | 16 | 14 | 11.5 |
| 42* | 100PC - 80 - 22 - 12.5 | 12.5 / 9.3 | 90 | | - | 25.5 | 25 | 24 | 22.5 | 20 | 16 | - |
| 43* | 100PC - 100 - 16 - 12.5 | 12.5 / 9.3 | 90 | | - | 21 | 20.5 | 20 | 19 | 17.5 | 15.5 | 13 |
| 44 | 100PC - 50 - 35 - 15.0 | 15.0 / 11 | 90 | | 40 | 39 | 36.5 | 33 | - | - | - | - |
| 45 | 100PC - 70 - 30 - 15.0 | 15.0 / 11 | 90 | | 41 | 39 | 36 | 34 | 29 | - | - | - |
| 46* | 150PC - 110 - 15 - 10.0 | 10.0 / 7.5 | 135 | | - | - | 20 | 19 | 18 | 17 | 16 | 14 |
| 47* | 150PC - 110 - 16 - 12.5 | 12.5 / 9.3 | 135 | | - | - | 21 | 20.5 | 19.5 | 18.5 | 17 | 15.5 |
| S.No | Model | Motor Power HP/kW | Max. Particle Size (mm) | | Q(m ³ /h) | 30 | 60 | 90 | 120 | 150 | 180 | 210 |
| 48* | 150PC - 145 - 9 - 10.0 | 10.0 / 7.5 | 135 | Head (m) | 13.5 | 12.5 | 11.5 | 10 | 8 | 6 | - | - |
| 49* | 150PC - 210 - 7 - 10.0 | 10.0 / 7.5 | 135 | | - | - | 9.5 | 9 | 8 | 7.5 | 7 | 6 |
| 50* | 150PC - 150 - 9 - 12.5 | 12.5 / 9.3 | 135 | | 14 | 13 | 12 | 11 | 9 | 6.5 | - | - |
| 51* | 150PC - 220 - 7 - 12.5 | 12.5 / 9.3 | 135 | | - | - | 10 | 9.5 | 9 | 8 | 7.5 | 6.5 |
| 52* | 150PC - 170 - 15 - 15 | 15 / 11 | 135 | | - | - | 18 | 17 | 16 | 14 | 10.5 | - |

* Pump Speed - 1440 rpm

Note : Recommended Particle Size 50 - 80 % of Discharge Size

Performance Curve

